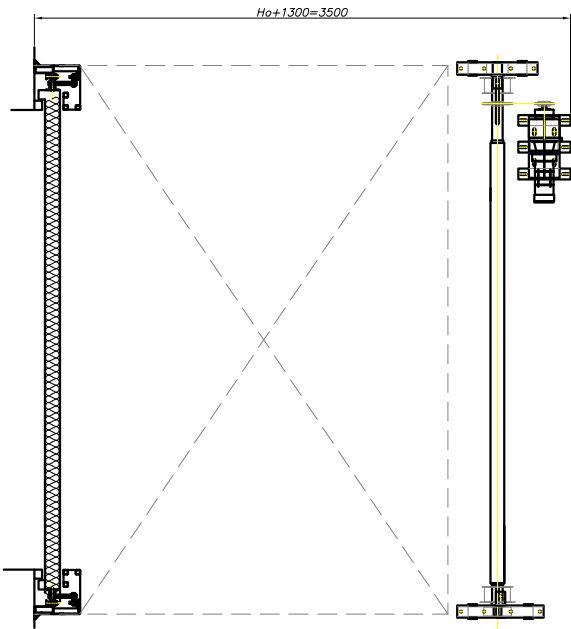
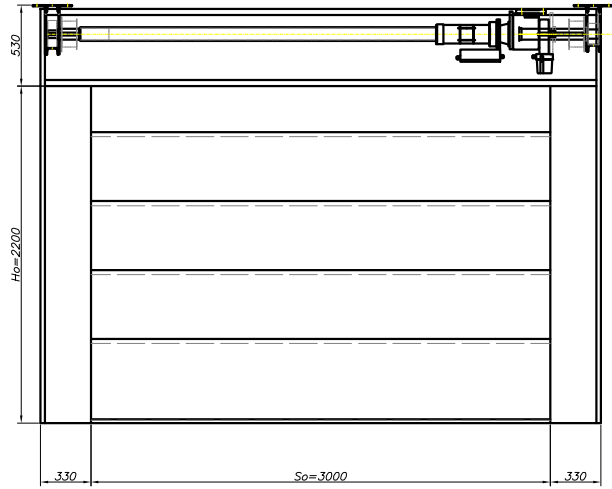
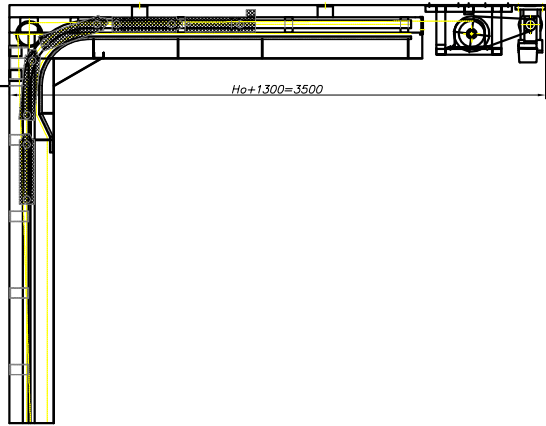


"WITKOWSKI" Sp. z o.o.
 05-800 Pruszków,
 ul. Magazynowa 7
 tel. (22) 759-85-00, fax (22) 758-66-53
 www.witkowski.org.pl
 e-mail: wit@witkowski.org.pl

Brama segmentowa MARC-S

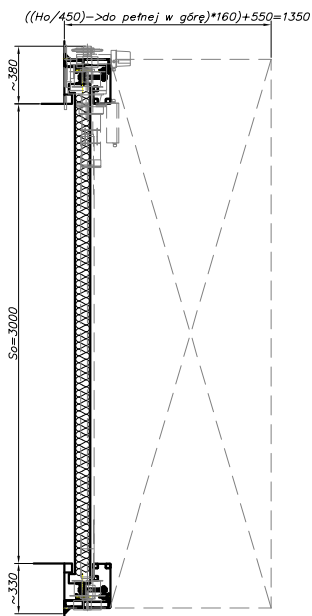
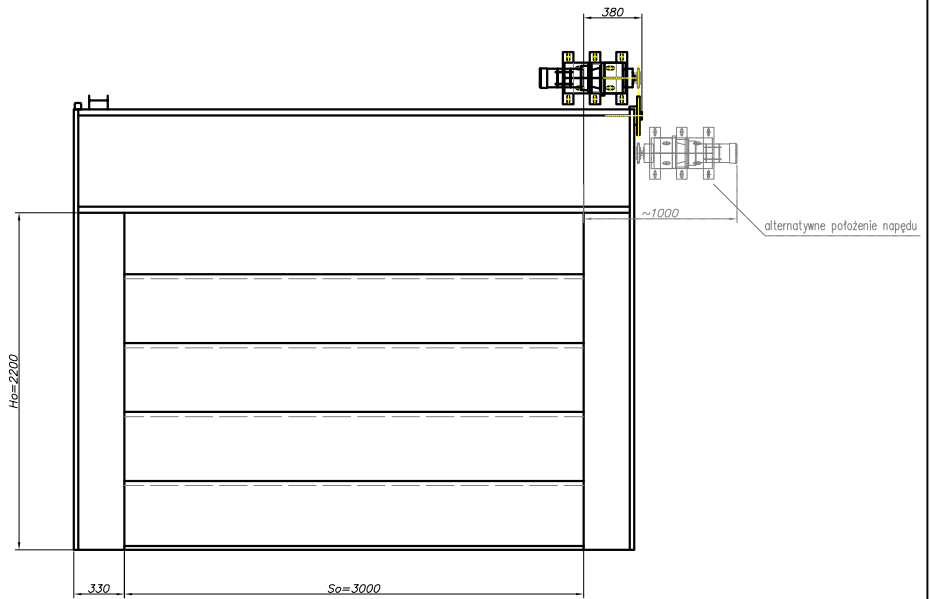
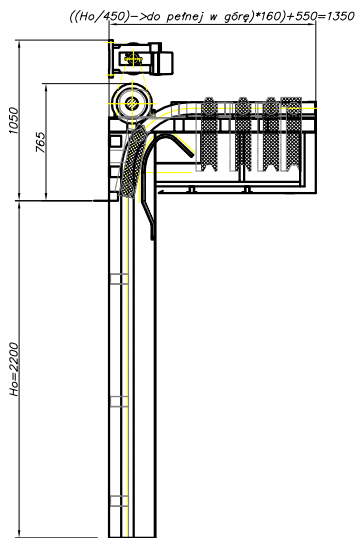
Do EI120, war. pionowy z napędem z tyłu bramy, mocowana do stropu.



"WITKOWSKI" Sp. z o.o.
 05-800 Pruszków,
 ul. Magazynowa 7
 tel. (22) 759-85-00, fax (22) 758-66-53
 www.witkowski.org.pl
 e-mail: wit@witkowski.org.pl

Brama segmentowa MARC-S

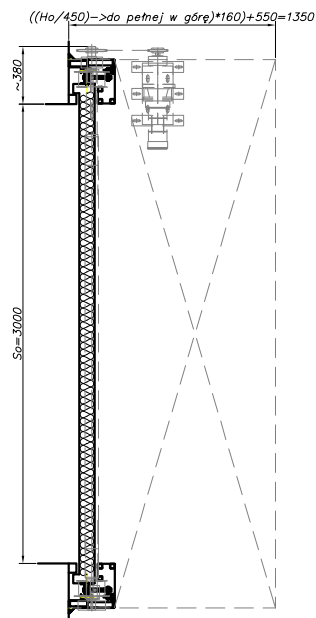
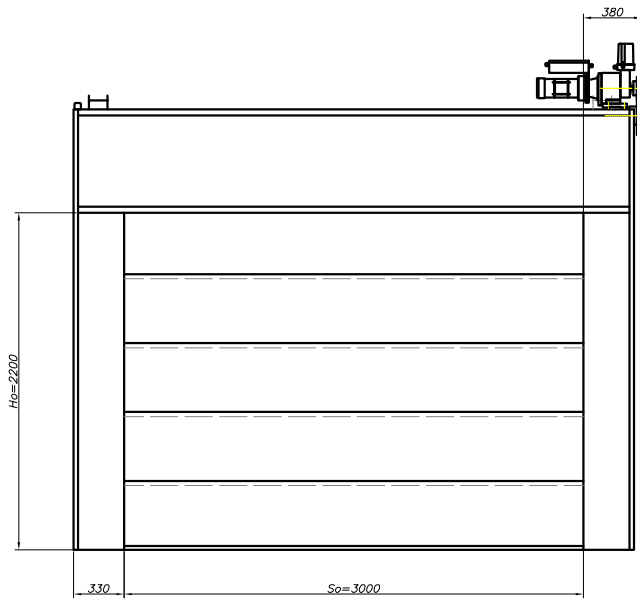
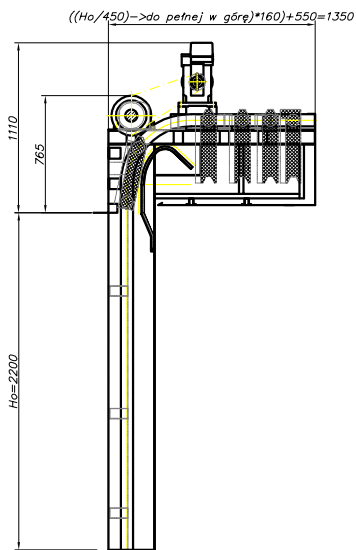
Do EI120, war. pinowy z napędem z tyłu bramy, mocowana do stropu.



WITKOWSKI Sp. z o.o.
05-800 Pruszków,
ul. Magazynowa 7
tel. (22) 759-85-00, fax (22) 758-66-53
www.witkowski.org.pl
e-mail: wit@witkowski.org.pl

Brama segmentowa MARC-S

Do EI120, war. pinowy z napędem nad bramą
kółka łańcuchowe z boku, mocowana do nadproża.



"WITKOWSKI" Sp. z o.o.
05-800 Pruszków,
ul. Magazynowa 7
tel. (22) 759-85-00, fax (22) 758-66-53
www.witkowski.org.pl
e-mail: wit@witkowski.org.pl

Brama segmentowa MARC-S

Do EI120, war. pionowy z napędem na branie
koła łańcuchowe z boku, mocowana do nadproża